



NEWS DETECTIVES

TODAY'S NEWS STORY

The rewilding story that hit the big screen

KEYWORDS

- ☐ **Profit:**
Making more money than you spend on the farm
- ☐ **Debt:**
Owing money to others
- ☐ **Boom:**
A huge growth in numbers
- ☐ **In the black:**
Making money



© Amanda Slater/CC by-SA 2.0

BUILD YOUR KNOWLEDGE

Rewilding is letting nature take control of a piece of land. The idea was first talked about in the 1980s. If you want some top tips about how to rewild spaces near you, check out our Planet Play workshop with wildlife presenter and warrior Chantelle Lindsay!

A new film showcases the wonders of rewilding on a Sussex estate.

Quitting the field

Isabella Tree had hit a wall. The farm she and her husband, Charlie Burrell worked on his estate was failing. Nothing they could do to their fields would make them yield a **profit**.

After trying every chemical and high tech tool they could, they were £1.5m in **debt**. So in 2000 they did something wild. Nothing.

Wild leap

They decided to let their farm be. They wanted to let the soil recover. They let cows, ponies and pigs loose, and they rewilded the landscape.

Now Knepp estate is full of life. They have rare birds, such as nightingales and storks. The soil is healthy as the wild animals pooped their way to a dung beetle **boom**.

Now Knepp's newly grown forests draw people from all over. And Charlie and

Isabella are **in the black**.

Like the movies

Isabella and Charlie's story is retold in a new film called *Wilding*, which hit cinemas last week. Rewilding is taking its deserved space in the spotlight.

There are only a handful of rewilded spaces in the UK right now. But it's not just about farms and forests. From letting the lawn grow wild to insect-sheltering logs, there are loads of things you can do to rewild where you live.





INVESTIGATION OF THE DAY

DO WE NEED INSECTS?

WHAT
was the problem
with the farm at
Knepp?

WHO
owns the
Knepp estate?

WHERE
is the Knepp
estate?

WHEN
did they
rewild their
estate?

WHY
is there a
beetle boom?

HOW
have the dung
beetles helped?

1 TAKE ACTION

Find the wildest natural spaces near you and celebrate them. Not the pretty green spaces, the ones that have been left alone and nature has reclaimed. How many different creatures and species can you see there? Take your friends and family there and show them how these spaces support biodiversity and help them see the beauty in their wildness. Can you find a space near your home or school to rewild?

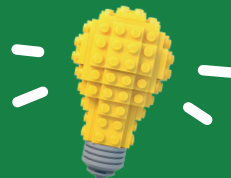


© Wirestock/Free pik

2 SHARE YOUR IDEAS

What have you found out in your investigation? Write, present or even record a piece that celebrates a wild space near you. Share what you've learned with your family and friends. What do they think? We want to hear your ideas too! Your teacher can share your reports with us too by sending them to editorial@theday.co.uk.

3 Build THE Change



COMPETITION TIME!

Because of traffic and poor town planning, 60% of 4 to 11 year olds never play outside on their own street. But research tells us that playing outside and connecting with nature is good for people and the planet. One brilliant solution is to set up your own Play Street that's designed for people and nature to thrive! Visit www.playingout.net then enter our design competition!

STEP 1:

Reimagine a street near you as a wild and playful street, one where young people can safely play outside and interact with nature.

STEP 2: Share your vision with us by creating a drawing or a 3D model made from LEGO, craft bits, natural materials or recycled rubbish. Don't forget to explain your awesome ideas and take a photo of your build.

STEP 3: Write a letter persuading the adults around you to set up a wild play street in your community so that local people, wildlife, and our amazing planet can all thrive. Read to them and then send it to us, along with your designs or photos to be in with a shot of winning!



Enter the
competition
to win prizes!

Visit www.theday.co.uk/build-the-change-planet-play/ to find out how to enter the competition.

This worksheet is available every weekday at 6:30am London time from <https://theday.co.uk/resources/news-detectives>.
For any feedback or help please contact buildthechange@theday.co.uk. Thank you.

LEGO, the LEGO logo, the Minifigure, and the Brick and Knob configuration are trademarks and copyrights of the LEGO Group. ©2022 The LEGO Group. All rights reserved.